



铜冠有色

021-68555105

	"	"
12		
	1	
	CPI	
	2019	GDP
12		

1

SHFE	349.30	-1.86	-0.53	222621	252975	/
------	--------	-------	-------	--------	--------	---

CPI

2019

GDP

12

2 ETF

	2019/1/24	2019/12/13	2020/1/3	2020/1/10			
ETF	2253.5	2515.8	2538.2	2525.9	-12.3	10.2	272.4
SPDR	797.7	886.2	893.3	874.5	-18.7	-11.7	76.8
ETF	16074.1	19059.2	18897.9	18856.2	-41.7	-202.9	2782.1
ishare	9863.1	11476.2	11316.4	11278.6	-37.8	-197.6	1415.6

Bloomberg

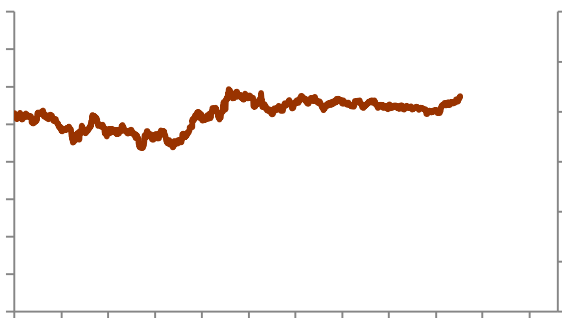
3

	Comex			Comex		
2020/1/10	8707377			319855		
2019/1/3	8703641	3736	0.04%	318208	1647	0.52%
2019/12/11	8787702	-80325	-0.91%	315917	3938	1.25%
2019/1/14	8421654	285723	3.39%	292555	27300	9.33%

Bloomberg

1 SHFE

2 COMEX



Wind

3 COMEX

4 COMEX

6 COMEX

7 SPDR

8 SLV

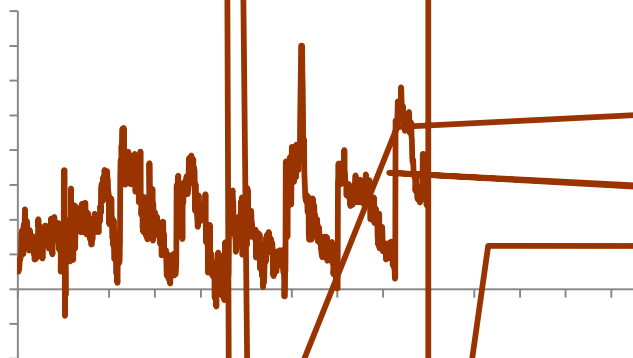
9

Wind

T+D

10

T+D



Wind

11

12

Wind

13

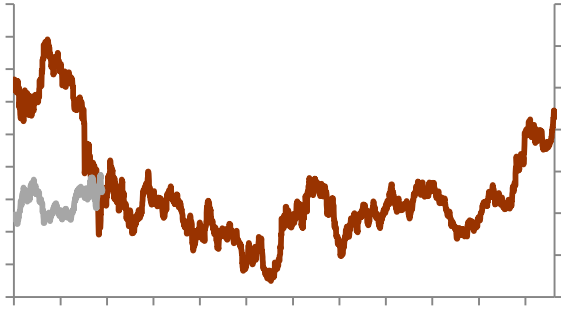
COMEX

14

Wind

15

16



Wind

17

VIX

18

CRB

Wind

19

10

20

TED

Wind

DEDICATED TO THE FUTURE

全国统一客服电话：400-700-0188

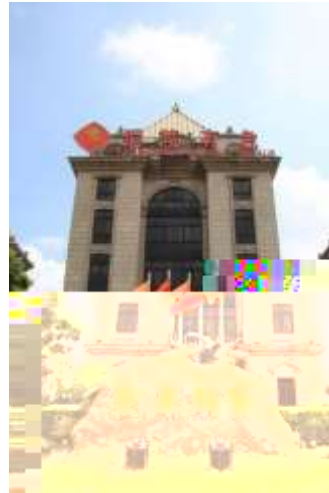
273
021-68559999
021-68550055

158 305
307
021-68400688

1072
2104A 2105
0755-82874655

129
2506B
0411-84803386

7
1002
0553-5111762



69
1201
0371-65613449

1287
A2506
0562-5819717

