



2015年9月21日 星期一

软商品周评

联系人 李智
电子邮箱 li.z@jyqh.com.cn
电话 021-68559999-201

白糖：涨势受阻 回落整固

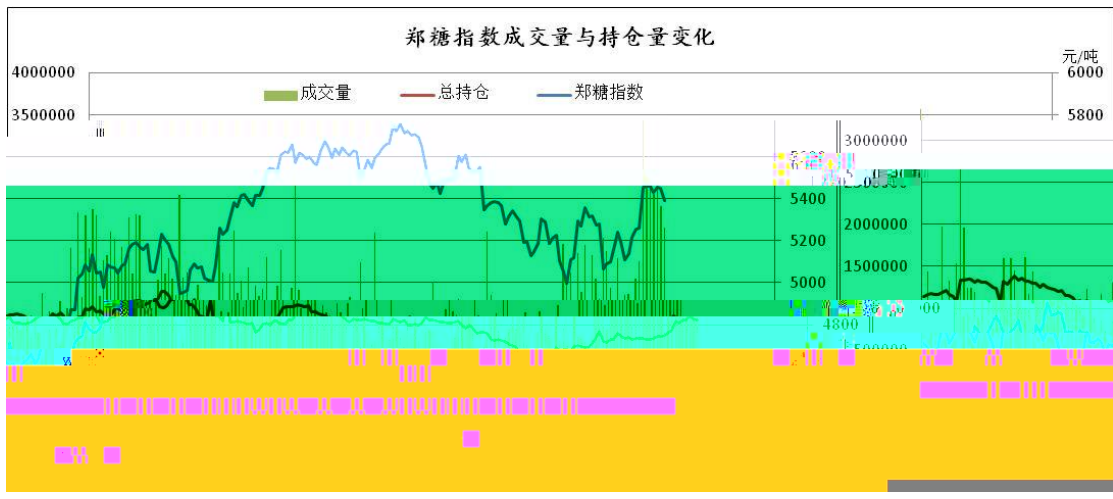
SR1601 1.31% 5434 /
182 1174 1 66 5160 /
40 / ICE 3 5.62% 11.75
3159 / 149 /
4160 /
15/16 2015/16
440-460 / 5100-5300 /
1601
5350-5600

1

SR1601	5531	5561	5412	5434	-72	1174	182	66	1
--------	------	------	------	------	-----	------	-----	----	---

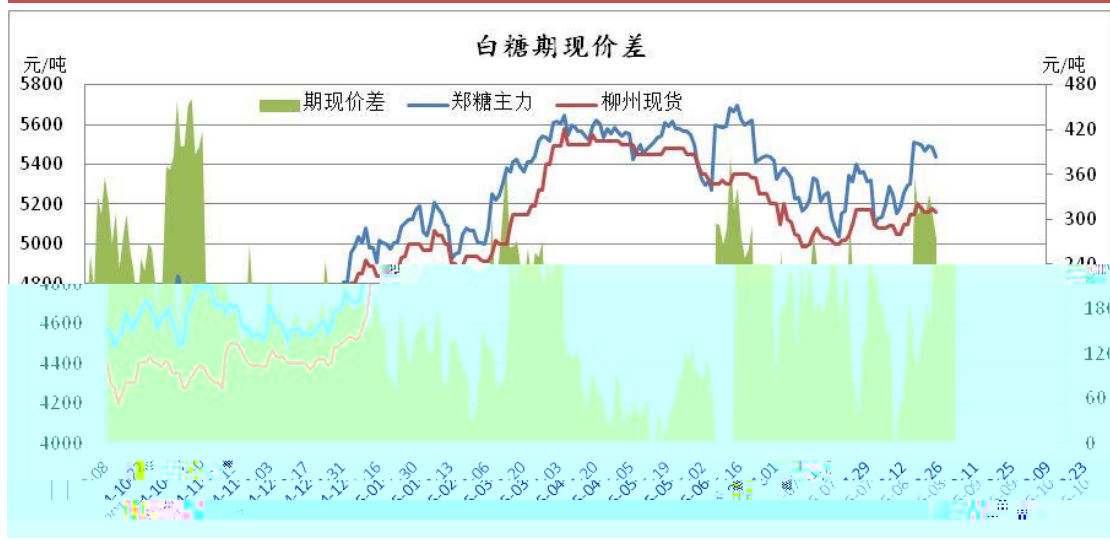
SR1601 1.31% 5434 / 182
1174 1 66

1



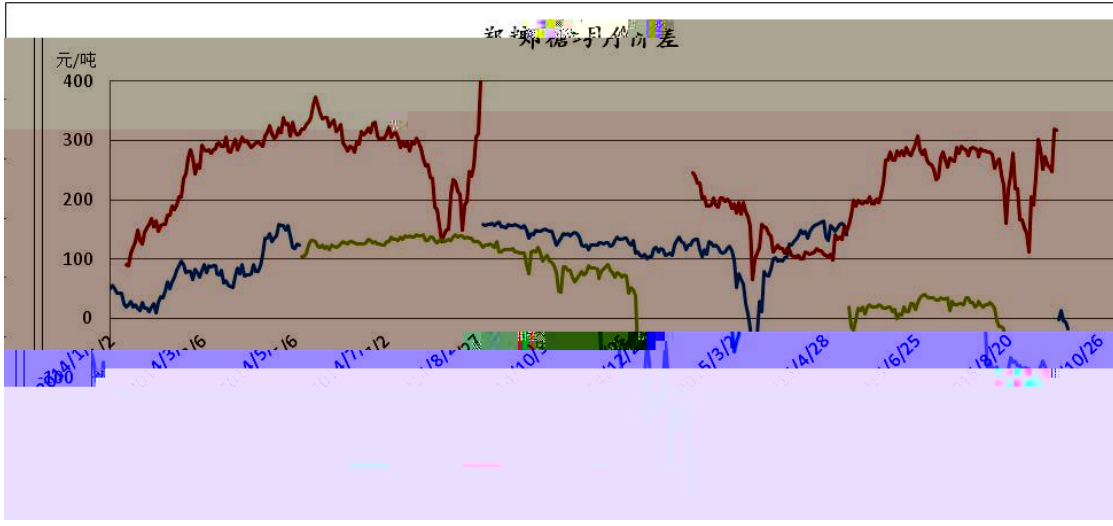
5434 / 72 /
5160 / 40 / 274 /

2



1605 1601 106 / 10
/ 1609 1605 18 / 15 /

3



2

		1601	/	5434	5506	-72	-1.31%
			/	5160	5200	-40	
			/	5200	5145	55	
			/	5060	5085	-25	

5160 /

40 / 5200 / 55 /

5060 / 25 /

4

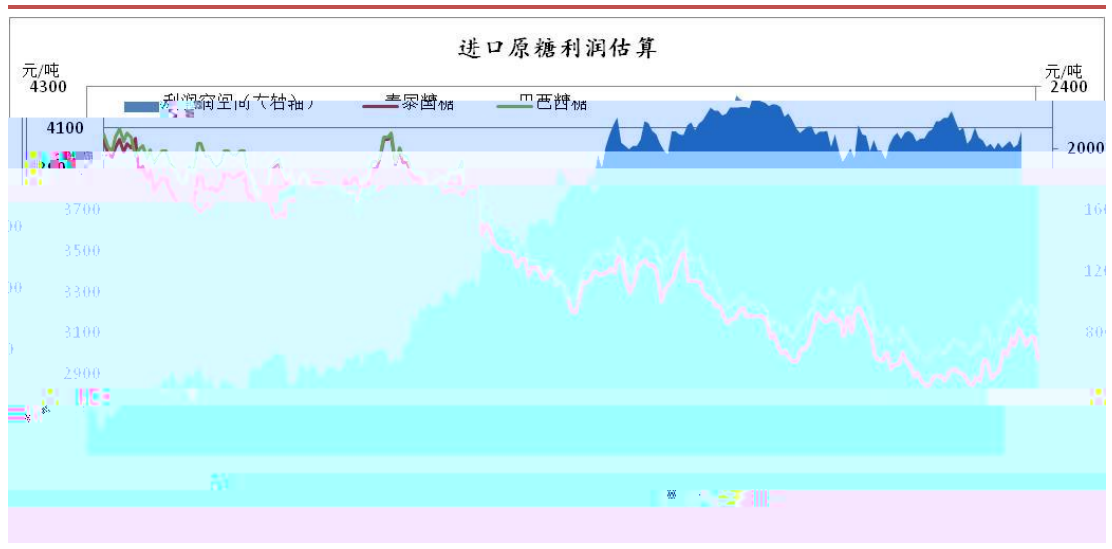


3

	ICE	3	/	11.75	12.45	-0.70	-5.62%
			/	3312	3461	-149	
			/	3159	3308	-149	

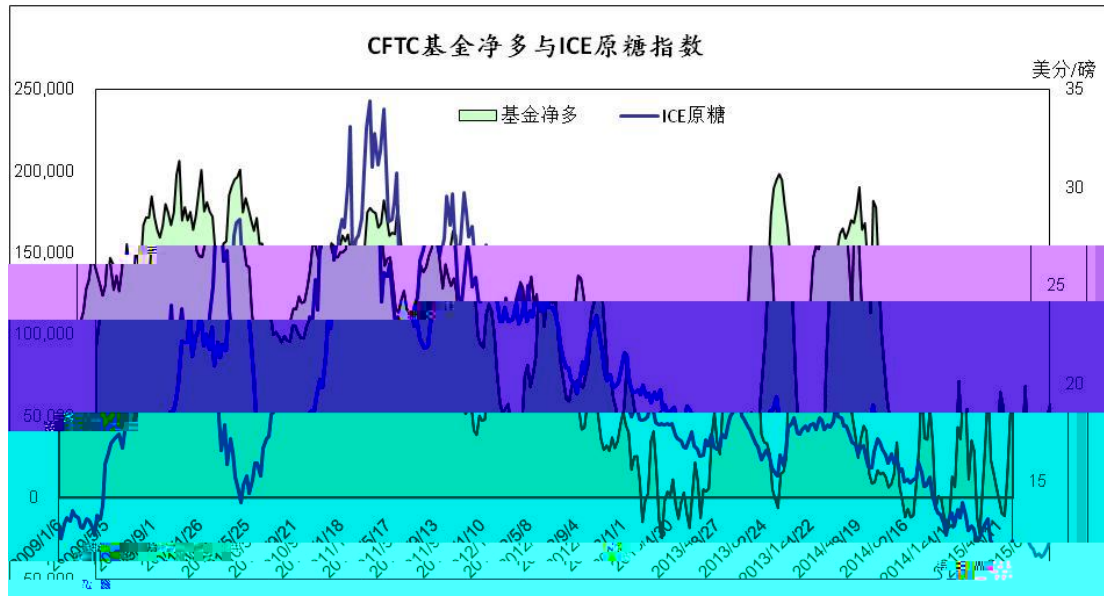
ICE 3 5.62% 11.75
3312 / 149 / 3159
/ 149 / 4160 /

5



CFTC (9 15) CFTC ICE
36,121 781,009 6,199 56,770 CFTC

6 CFTC



CFTC

2014			
	8	15.5	
		2015 8	12.13
0.69	6.75	3.37	0.41
10.07	15.50	1.09	3.32
	14.4		14.4
	(TCSC)		
53			
2016			
	15/16	380	
	INTLFCStone	2015/16	380
2009/10	2014/15	90	2015/16
1.805	0.8%		

SR1601

60

ICE 3

11.5

7 1601 K

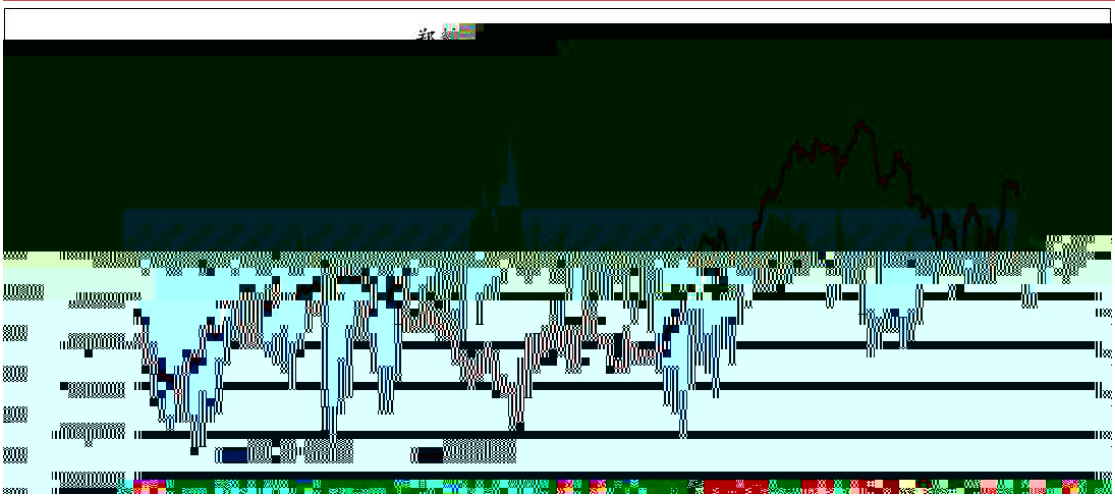
8 ICE 10 K



9 18

25,830 -43,159

9



棉花：籽棉收购价走低 郑棉弱势震荡

			CF1601		1.20%	12400 /			12.4
33			2.9	30.9					CC Index
3128B	13059 /			1 /	ICE	12		4.09%	60.55
/	Cotlook A		69.35 /			0.65 /		1%	11361
/		105 /		13748 /				49 /	
8				PMI	48.6%				14.2
									44.1
				52%		17%			
	47.3			1.64			20		
				12300-12600					

1

CF1601	12530	12580	12400	12400	-150	33	-12.4	30.9	-2.9

			CF1601		1.20%	12400 /			12.4
33			2.9	30.9					

2

	CF1601	/	12400	12550	-150	-1.20%
	CC Index 3128B	/	13059	13060	-1	

CC Index 3128B 13059

/ 1 /

1 3128B

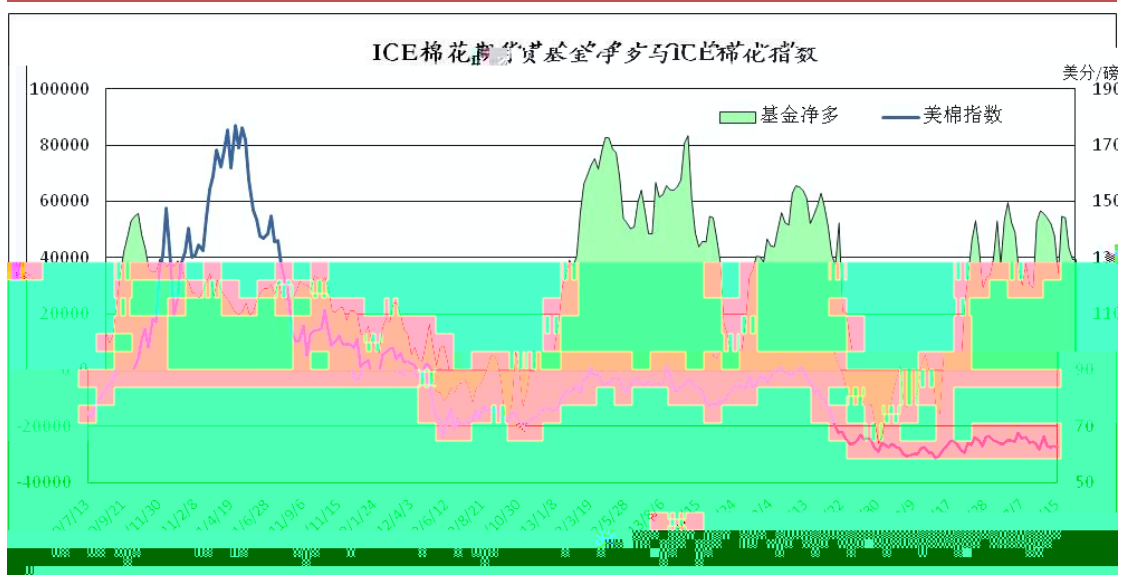
3

	KC32S	/	20670	20655	15
	JC40S	/	25335	25335	0
		/	7090	7140	-50
		/	14280	14150	130

15 / JC40S 25335 /
 50 / 14280 /
 KC32S 2067055 /
 7090 /
 130 /

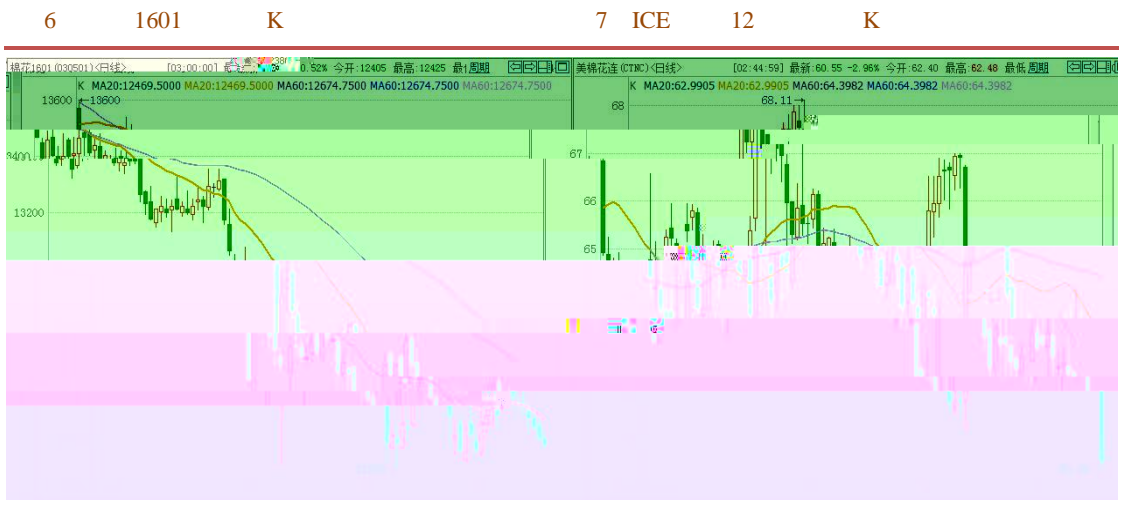
2

ICE 9 15 CFTC ICE
181 39,414 ICE
5 ICE ICE

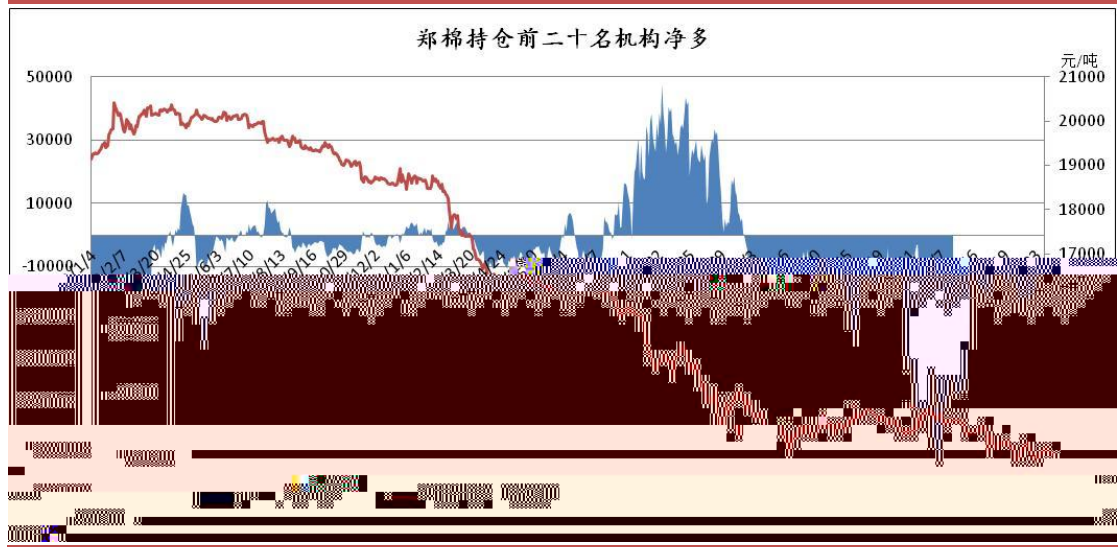


CFTC

1601 20 ICE 12



3,301 -16,175



400-700-0188