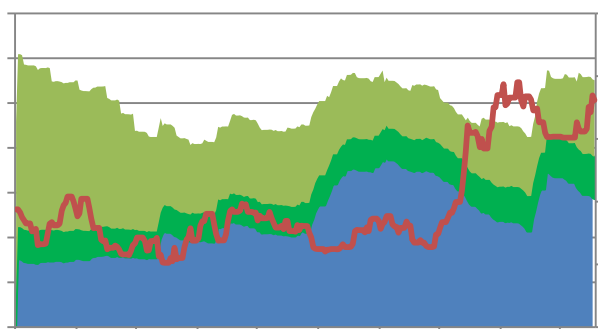
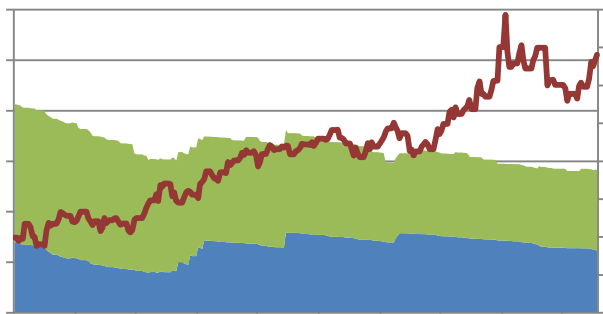
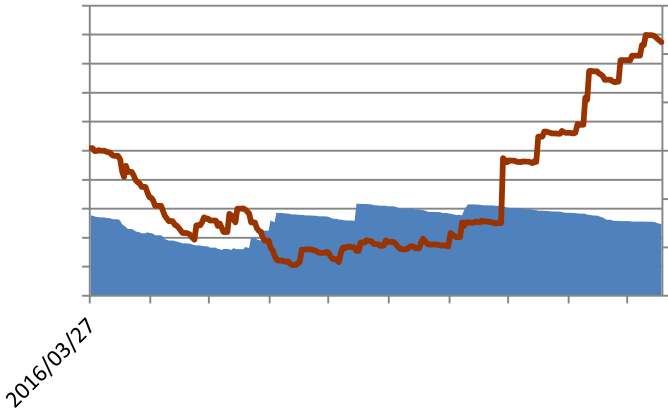
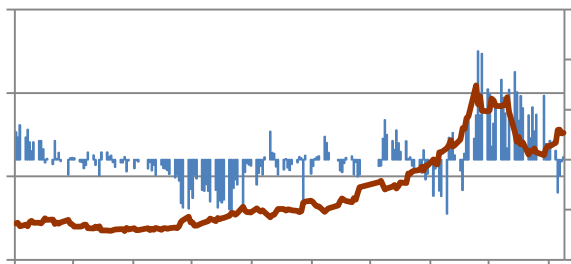

SHFE	47,400	1,670	3.65	487,058	489,208	89,208	/
LME	5,910	320	5.72				/
SHFE							

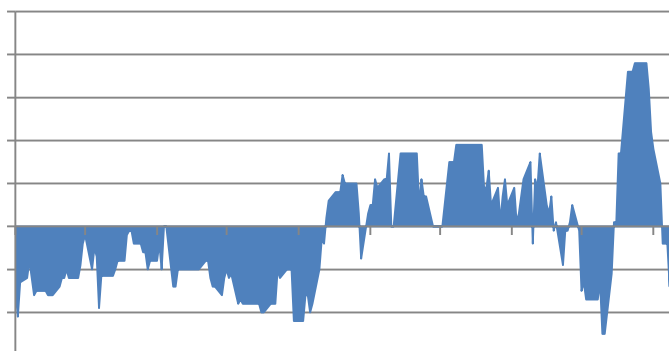






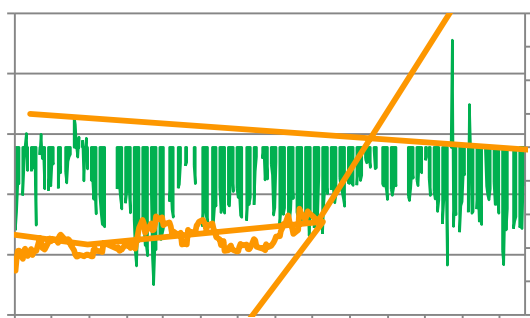


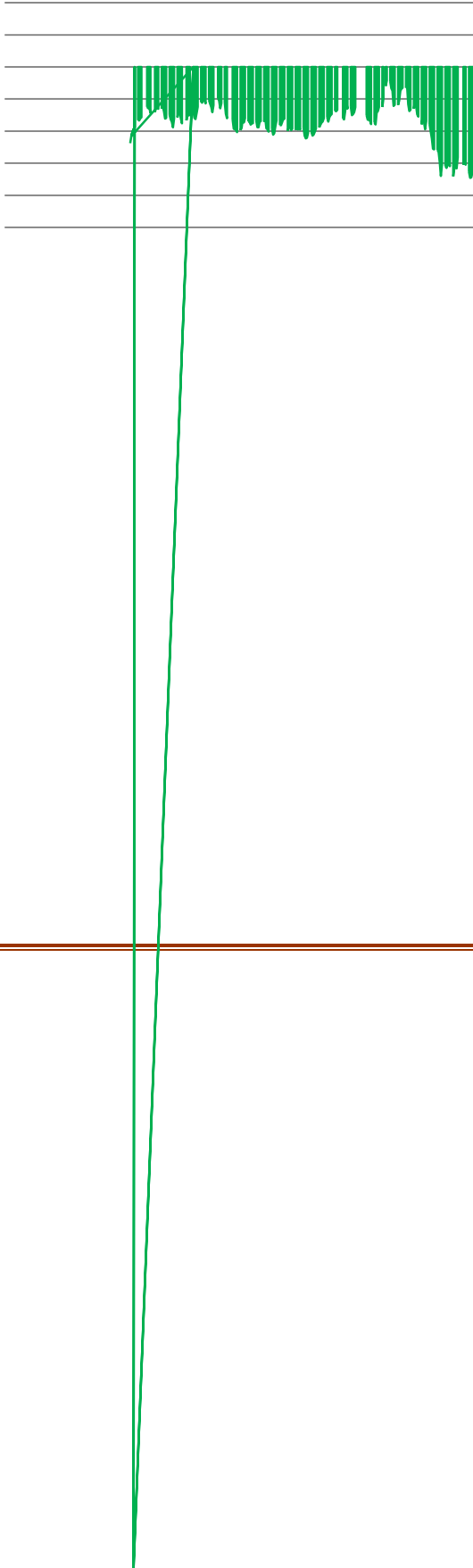
2



			5,820	47,300	47,669	6.9005	-369	8.13	8.19
60	1		5,909	47,100	48,600	6.9308	-1,500	7.97	8.23

			2,220	18,500	19,096	6.9005	-596	8.33	8.60
	12.5	1	2,308	18,450	19,899	6.9308	-1,449	7.99	8.62
	17%	2	2,303	18,555	19,854	6.9308	-1,299	8.06	8.62
	0%	3	2,305	18,600	20,052	6.9953	-1,452	8.07	8.70
	5%	4	2,305	18,620	20,056	6.9953	-1,436	8.08	8.70
	200	5	2,306	18,610	20,239	7.0563	-1,629	8.07	8.78





DEDICATED TO THE FUTURE

273

021-68559999

021-68550055

3069

A 2908

0755-82874655

69

1201

0371-65613449

67

D 705

0411-84803386

1287

A2506

0562-5819717

