

CU		54000	52000	
ZN		26000	25250	
PB		19500	18750	
AU		280	275	
AG		3930	3800	

1

2

1-5

1-4

1

12

30 OPEC

11

PMI

			7000			
		3.86%	60		6750	/
	93					
		2.86%			10	
			54700	/		
PMI			52390	/		2.65%
	140-120	/		120-0		
	20	/		70	/	12
		10	21.33		12.36%	1-10 258.5
		13.6%	10	2.9		27.25% 1-10
27.4		29.12%				
	260	/			LME	
					11	LME 8
	6	LME			11-12	
10				25.2		7.03%
	7	1-10	302.3		12.3%	1-9 12.81%
						2
	2018		250	2021	300	
			684,333		2017	110
						2020
			"	"		
			(TC/RC)			2018
	CSPT		2018			

					GDP				
					2%				
			OPEC						
		11		PMI	51.8			51.4	
11		PMI	50.8	5			PMI		
					52000-54000	/			
			10				10		
			ADP		11				
21									
		1801					24585	/	
	25185	/		239.73					16.68
	LME						3242	/	28.27
			12	1	0#		25130-25480	/	
	1712	90-	100	/	0#	12	220-	250	/
									0#
		25270-25350	/		1712		150-200	/	
50	/								
									0#
	25290-25350	/				70	/		1801
	250-270								
						12	1	LME	
17.5	/	LME		10		12	1		21.15
									70303
9893									
		SMM	12			350	/	3400-3600	/
			10-15	/		12.5	/		30
					30				
2	SMM	2017		55			7.4%	2017	
		70%							55
		30					60-65	/	

" 11 27 -12 11 "

19000

19500

Al Hadeetha

5000

10

40.89%

10

6.68%

4.04%

Noranda

143

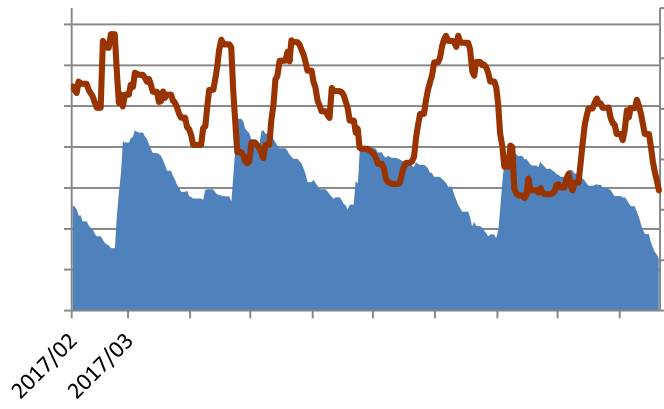
FMG

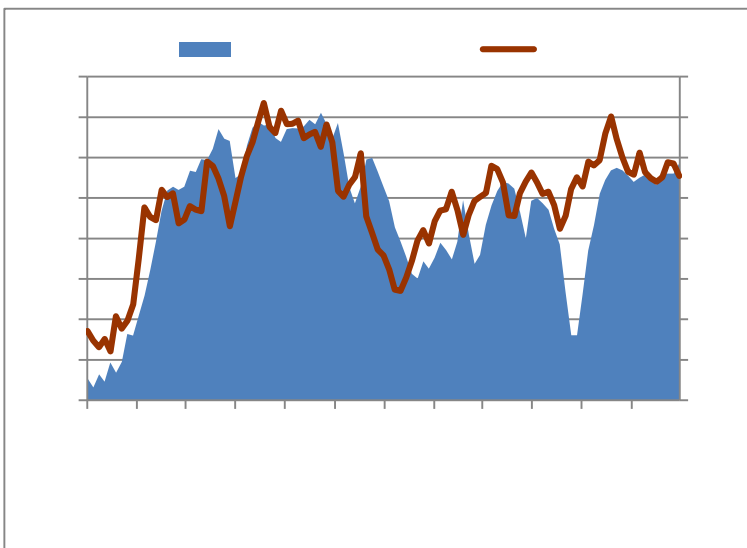
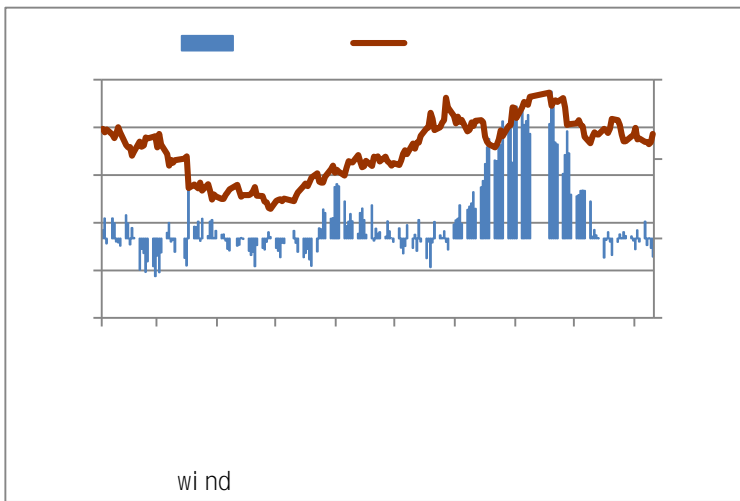
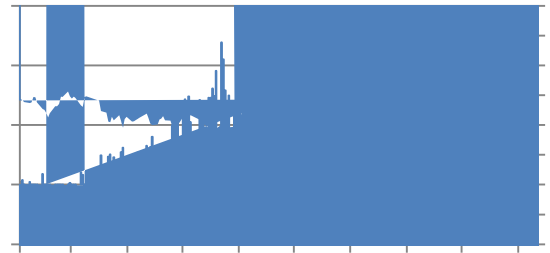
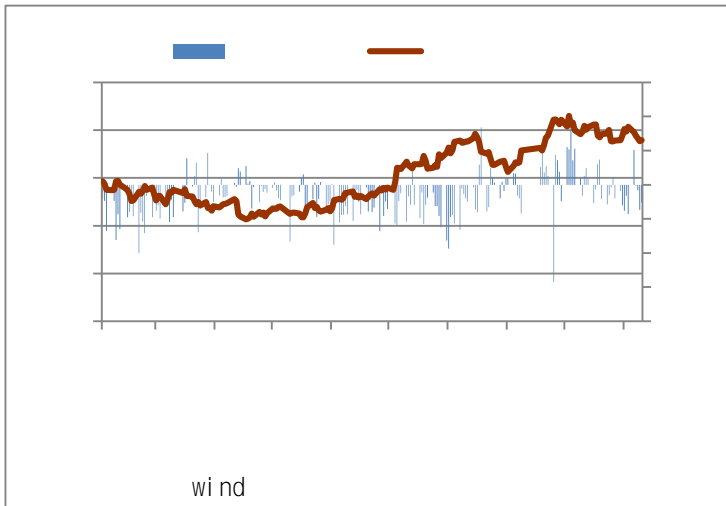
3.2

TC

80

Quebrada Blanca





			6,754		53,104	6.6163	-334	7.81	7.86
(/)	80	1	6,754	55,30	ref				

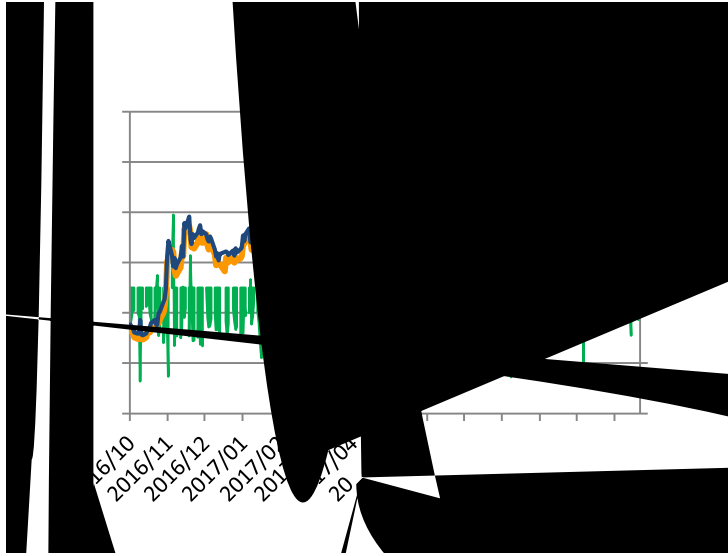
			3,185	25,270	25,827	6.6163	-557	7.93	8.11
(/)	80.0	1	3,175	26,450	25,806	6.6320	644	8.33	8.13
	17%	2	3,168	0	25,751	6.6320	-25,751	0.00	8.13
	1%	3	3,169	25,290	25,890	6.6653	-600	7.98	8.17
	5%	4	3,168	25,185	25,879	6.6653	-694	7.95	8.17
(/)	300	5	3,164	25,110	26,019	6.7092	-909	7.94	8.22

Bl oomberg,

			2,547	18,450	20,839	6.6163	-2,389	7.24	8.18
(/)	12.5	1	2,551	20,750	20,915	6.6320	-165	8.14	8.20
	17%	2	2,548	0	20,892	6.6320	-20,892	0.00	8.20
	0%	3	2,548	18,695	20,995	6.6653	-2,300	7.34	8.24
	5%	4	2,545	18,750	20,976	6.6653	-2,226	7.37	8.24
(/)	200	5	2,543	18,750	21,092	6.7092	-2,342	7.37	8.30

Bl oomberg,

1. 3 4 5 ;
2. LME 15
- 3.



400-700-0188