



2018 4 9

jytzzx@jyqh.com.cn

021-68555105

	402.3	412	-9.7	-2.35%
	62.06	64.94	-2.88	-4.43%
	67.11	69.34	-2.23	-3.22%
	5.05	4.4	0.65	14.77%
	-0.04	0.07	-0.11	-157.14%
	0.43	0.49	-0.06	-12.24%
	62.06	64.94	-2.88	-4.43%
	66.78	69.13	-2.35	-3.40%
	65.18	65.87	-0.69	-1.05%
	65.34	66.09	-0.75	-1.13%
	65.18	65.44	-0.26	-0.40%
	195.47	202.06	6.59	3.26%
	195.78	202.1	6.32	3.13%
	601	618	17	2.75%

Bloomberg Wind

1

3

2

1095

1097

2

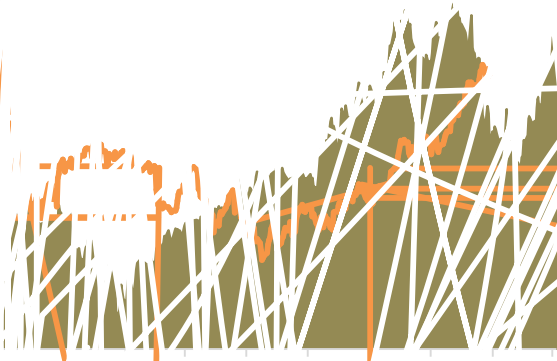
3

15

	93%		0.7		1046
	2.7			789.8	25.0
	217.5			59.7	
6					
	2021		55	/	
7					
	4	3		200	
8	2018	OPEC		2017	42.5 /
	3	OPEC			11
9				2022	650 /
	500	/	OPEC		435 /
	2018			4	15
10		OPEC			5
					11
11					
	47-55				
12	1-2		3069	1.7%	9439
2.9%		5888	4.4%	4962	6.4%
	3.6%	8.6%			

1 WCI Brent

2



3 WTI

4 Brent

242628

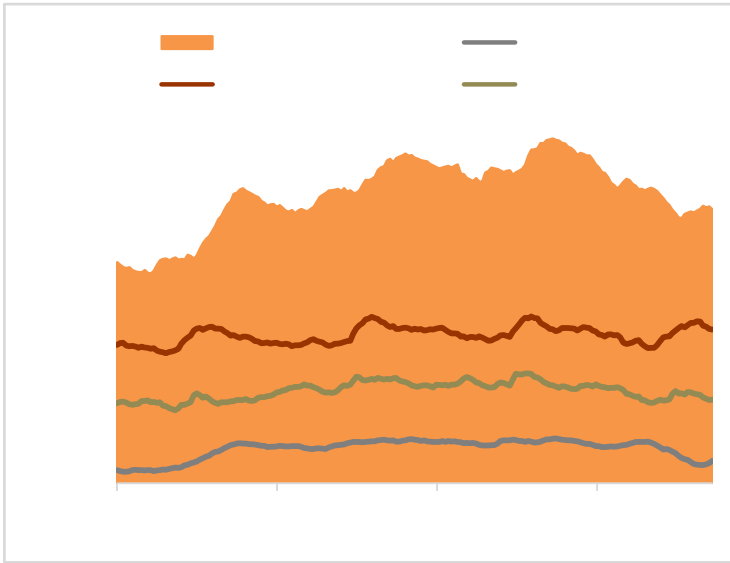
5

Bloomberg Wind

EIA	3	30	EIA	461.7	4.253
139.68			111.6	157.76	
53.7		136.04		366.6	3489.3
	93%		0.7		

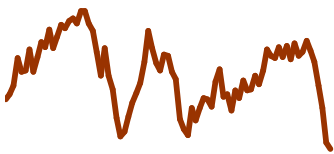
6

7



8

9



Bloomberg

	(CFTC)	4	3
NYMEX	69.95	16225	
82.93	24968	12.97	8743

10WTI

11 WTI

Wind



3069  
A 2908  
0755-82874655

