

SC1809 , 6.35% 427 / 31.68
13480 WTI 67.39 / 8.59% Brent 72.58
/ 8.15%
70 / SC OPEC 4 WTI
EIA IEA
OPEC , EIA

SC1809	426.1	400.5	25.6	6.39%	/
WTI	67.39	62.06	5.33	8.59%	/
Brent	72.58	67.11	5.47	8.15%	/
WTI-Brent	5.19	5.05	0.14	2.77%	/
WTI1805-WTI1806	0.06	-0.04	0.1	-250.00%	/
Brent1805-Brent1806	0.65	0.47	0.18	38.30%	/
WTI	67.39	63.42	3.97	6.26%	/
Brent	72.85	68.53	4.32	6.30%	/
OPEC	68.73	64.81	3.92	6.05%	/
	68.91	64.67	4.24	6.56%	/
	68.67	65.57	3.1	4.73%	/
NYMEX	206.54	195.47	-11.07	-5.66%	/
NYMEX	210.02	195.78	-14.24	-7.27%	/
ICE	642.5	601	-41.5	-6.91%	/

Bloomberg Wind

1					9	
2		3			3219	2
9	3		2	154%		159%
3				3		48
	2	El Feel	El Sharara			3
		156	3	2		4

0.75	/							
6								
7					5			
700	3	991	/					
8		4						
2019			1150				100	
	3		1040	2			26	
2018		1070						2017
	140		2015				1140	
	2018	2019			63			
WTI	2018	2019			4			
			60					
9				2018			(IPO)	
	2019	IPO						
10								
11								
7								
12	OPEC							
	OPEC		2		1740		28.54	
		4300	6					
	2018							
OPEC	3	3195.8	/	2017	3			
			3		990.7	/	2	993.5 /
	3		150.9	/	7.7	/		OPEC
2018		163	/	9870	/			
13	OPEC	Barkindo			2018			
	2018			2018				
				6			OPEC	OPEC
	OPEC	3		150%	OPEC		120%	
14		2020	WTI		50	-55		
		2018/19	OPEC			180	/	

			2018	180	/	OPEC	
15	IEA						
		20	/	9790	/		OPEC
						2018	OPEC
		180	/				
		2018		150	/	150	/ OPEC
			3250	/		2018	
30%							
2	(OECD)		2600		28.41		3000
			5		5		

1 WTI Brent

2

3 WTI

4 Brent

==

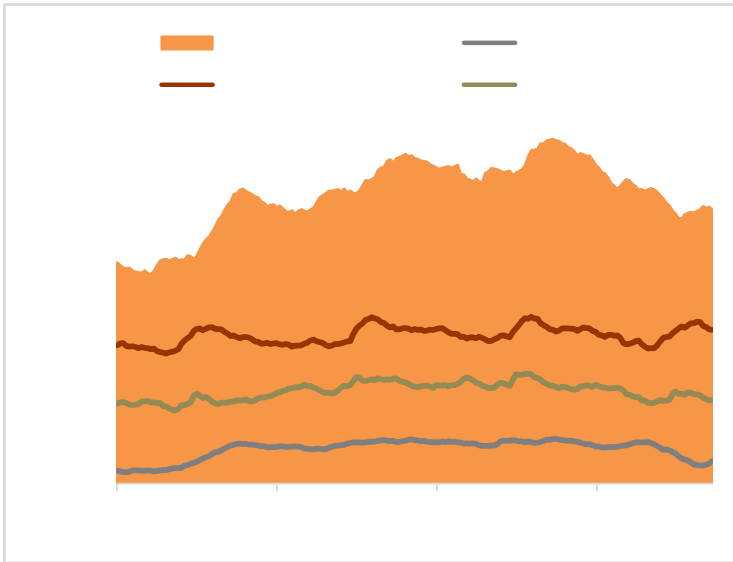
2016-
r

==

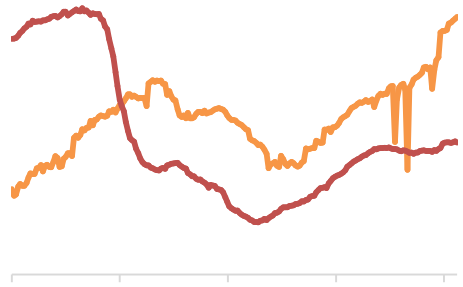
==

==

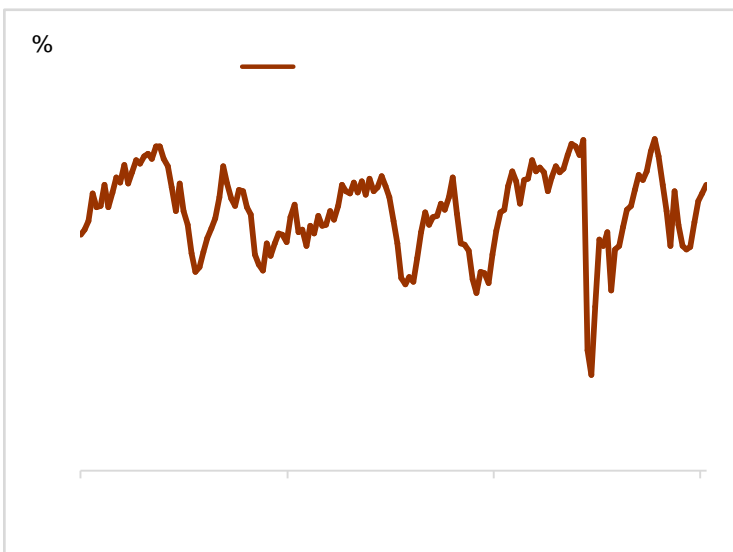
6



7



8



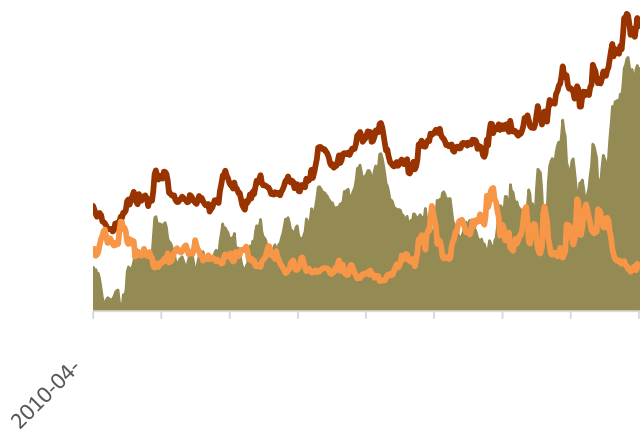
9

WTI

	(CFTC)	4	10
NYMEX	70.71		7535
	83.64	7066	12.93
			469

10WTI

11 WTI



Wind

400-700-0188



273

021-68559999
021-68550055

300

2603 2904
021-68400688

3069

A 2908
0755-82874655

69

1201
0371-65613449

67

D 705
0411-84803386

1287

A2506
0562-5819717

